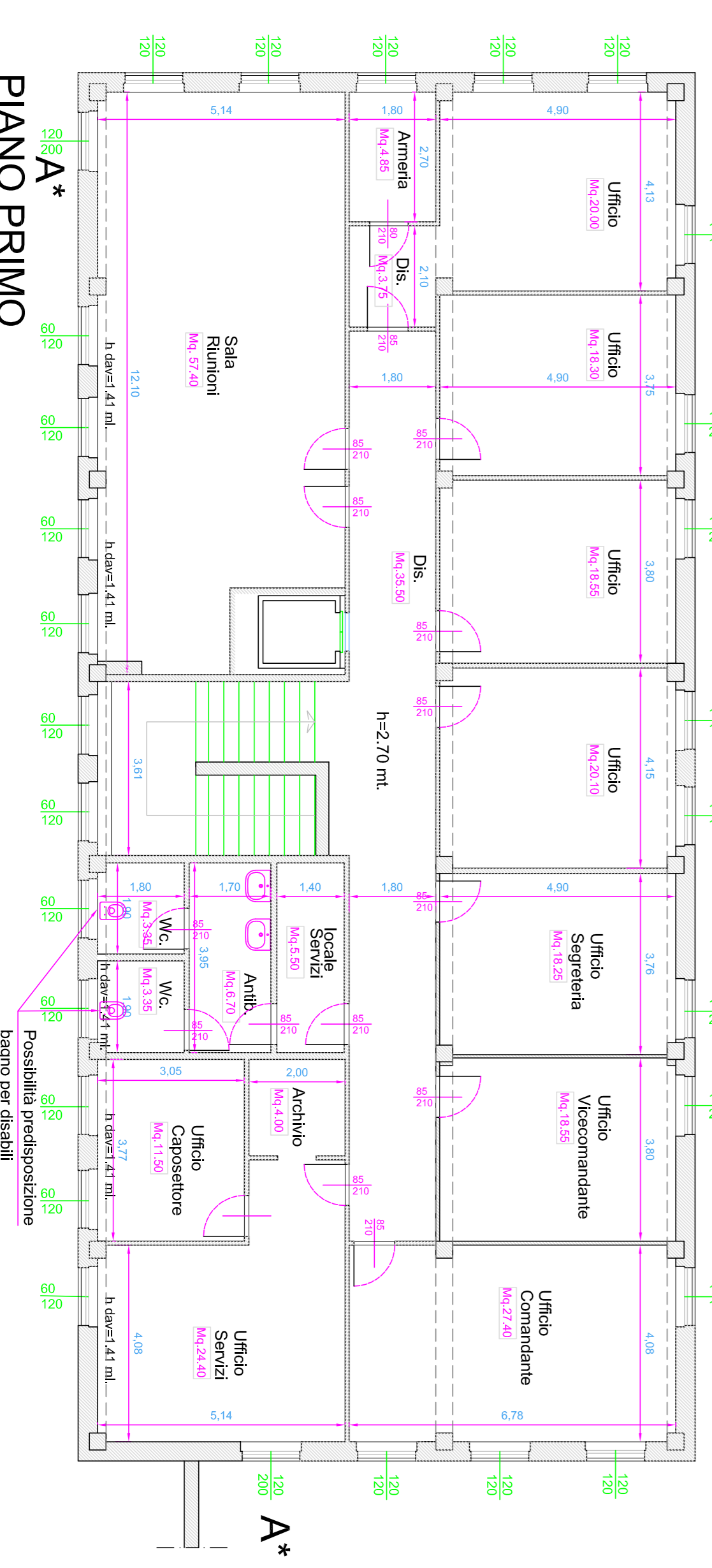


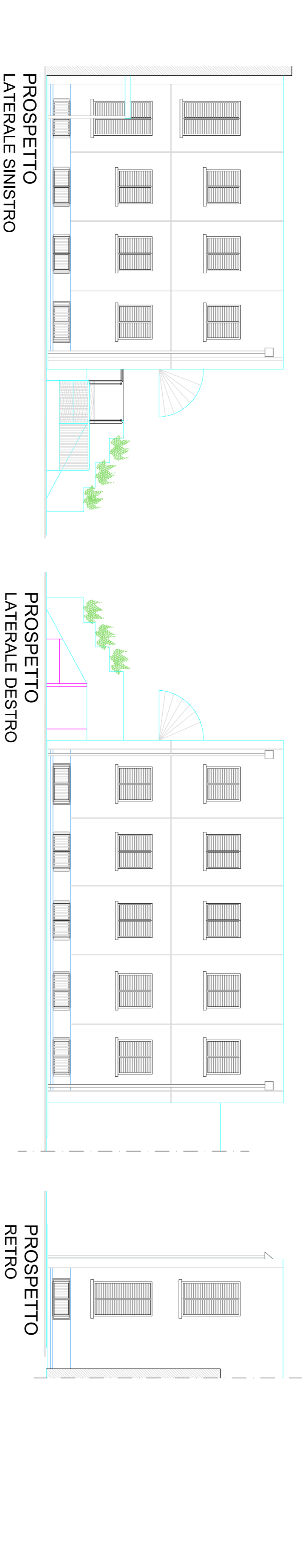
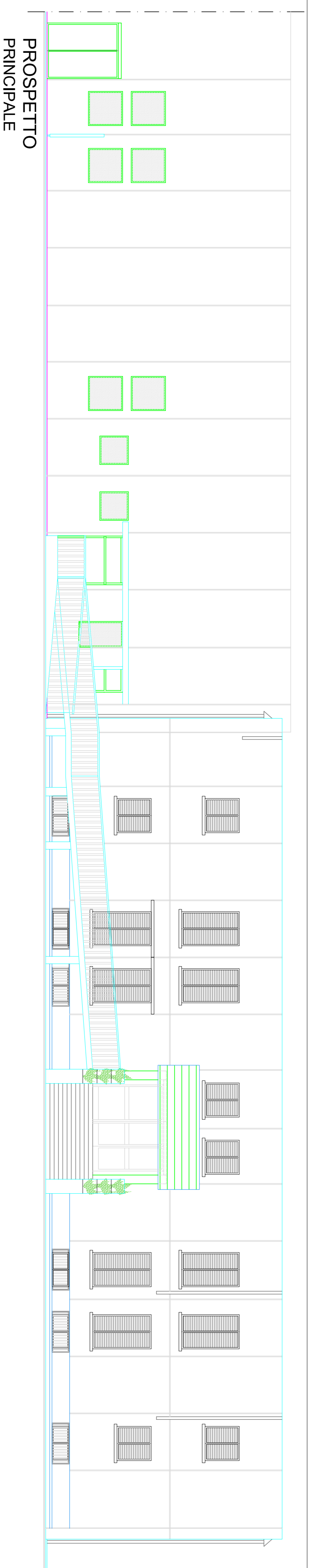
PIANO SEMINTERATO



PIANO TERRA-
RALZATO



PIANO PRIMO

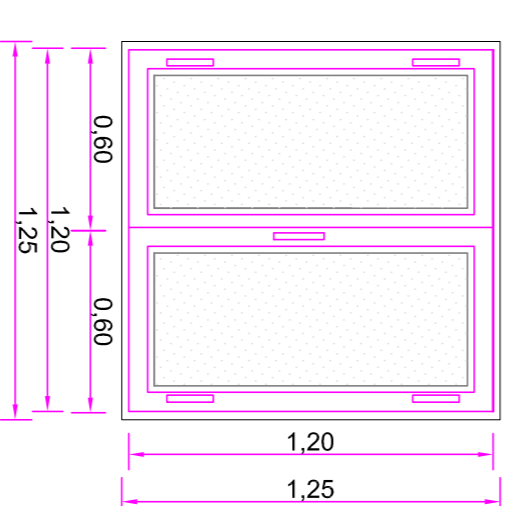


ABACO INFISSI

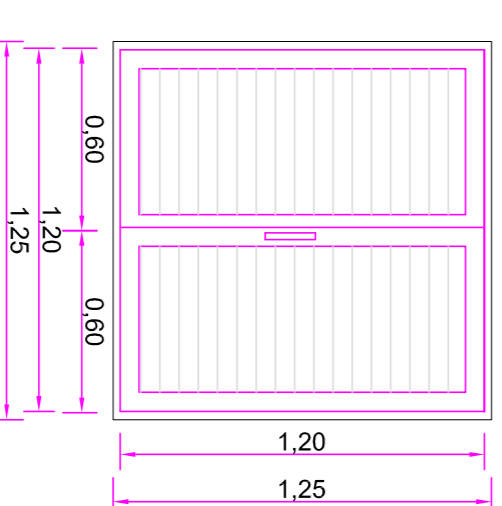
Serramenti in alluminio con vetrocamera 6-7/12/-67

Finestra in alluminio

Vista Interna

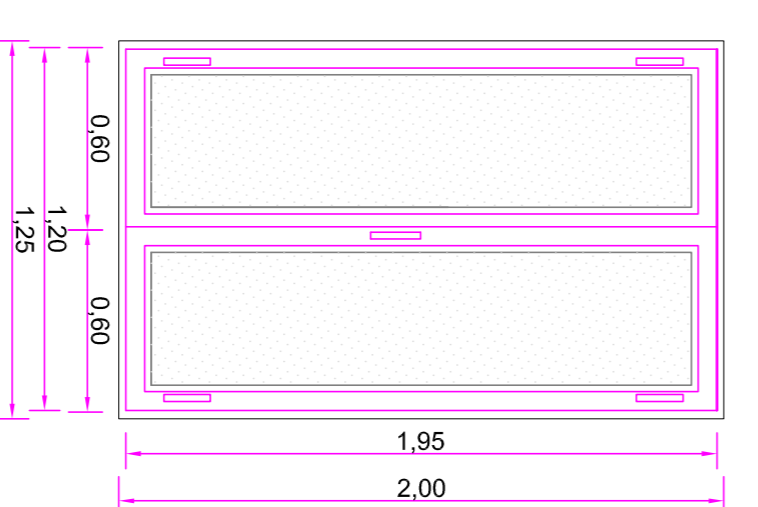


Vista Interna Persiana

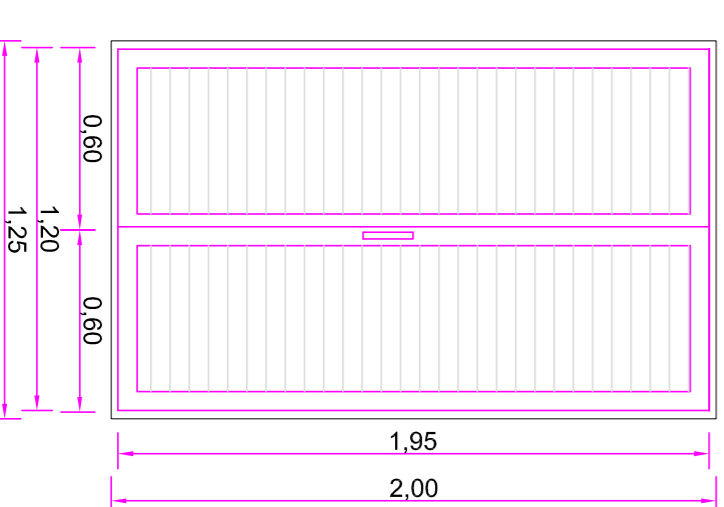


A* Finestrone da realizzare

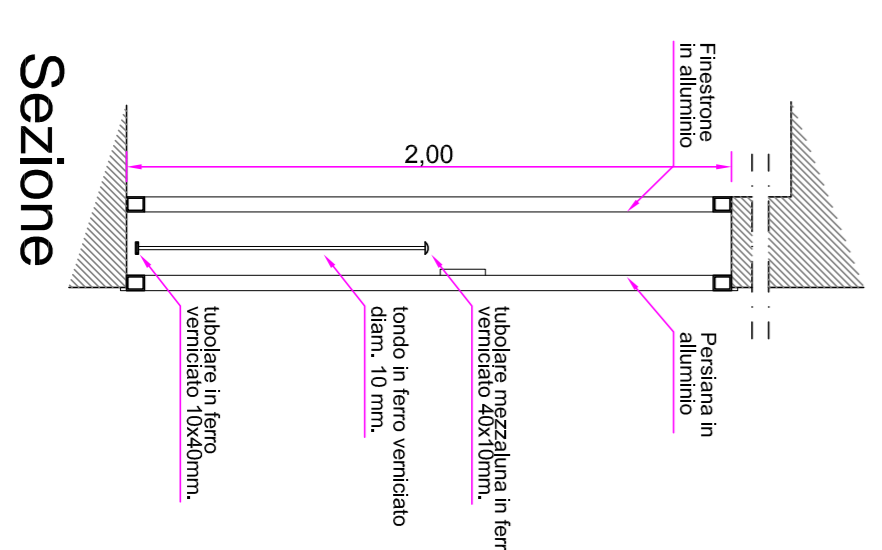
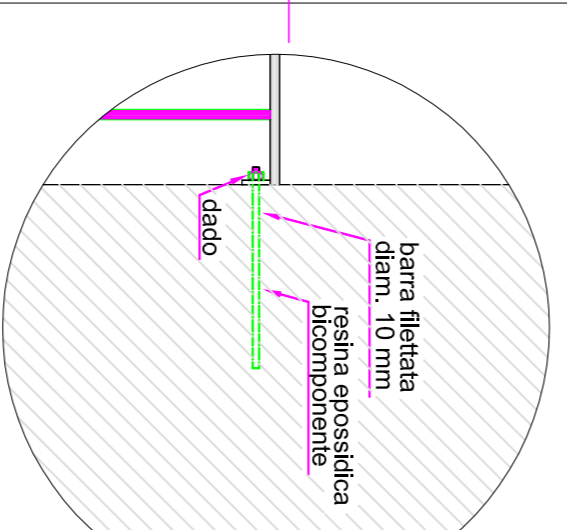
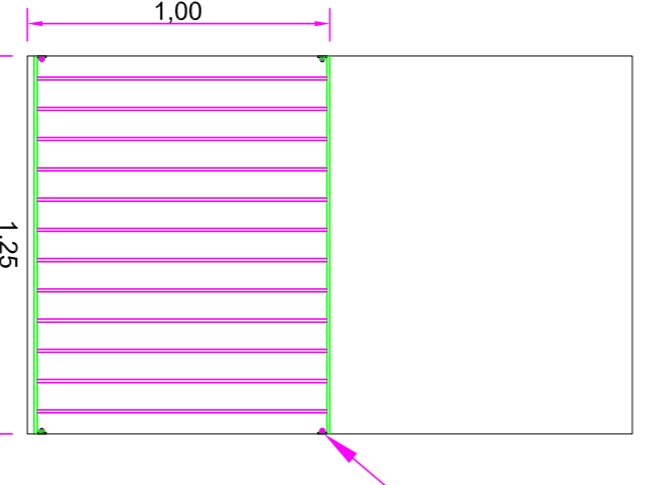
Vista interna



Vista interna Persiana



Parapetto del finestrone da realizzare



SCALA 1:25

atam



Direzione Servizi Infrastrutturali
Ufficio Manutenzione
U.O. Progetti e Nuove Realizzazioni

PROGETTO DEFINITIVO-ESECUTIVO



Ristrutturazione dell'edificio ex sede
ATAM da adibire a nuova sede degli
Uffici della Polizia Municipale

Prot. 78.759 Fascicolo L.1/11/2008 CUP B13B09000030004 Arezzo 29/06/2009

Tavola 3
Scala 1:100
STATO MODIFICATO
Pianta, Prospetti fabbricato
Abaco Infissi

I Progettisti:
Geom. N. Remi, Geom. S. Romano, P.L. Stefano Carral

I Collaboratori alla progettazione : Geom. Mercantoni L., Geom. Stacchini L.

Il Responsabile del Procedimento : Dott. Ing. Antonella Fabbianelli